

数量総括表

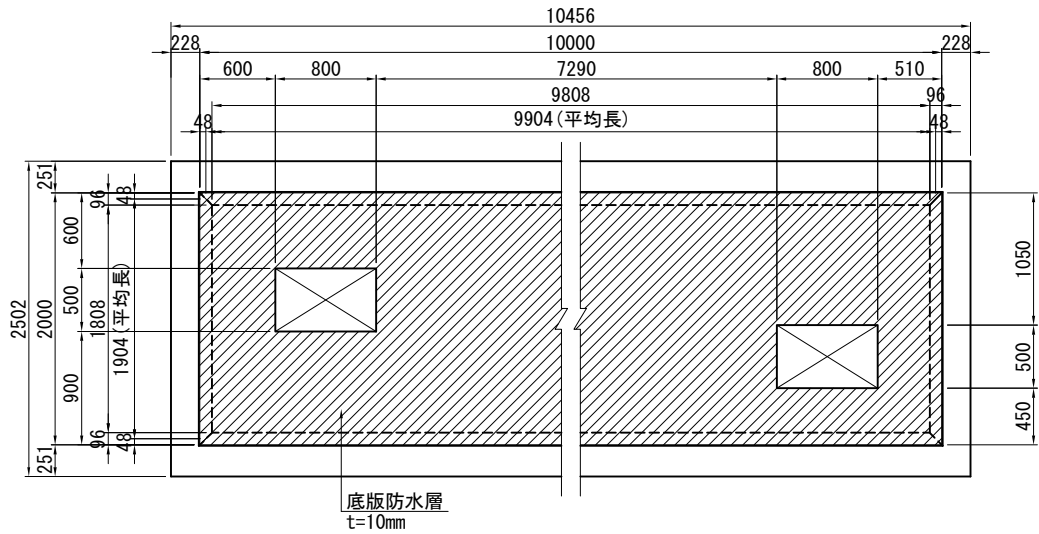
既設防火水槽改造補強(中央北-A4)

[illegible]

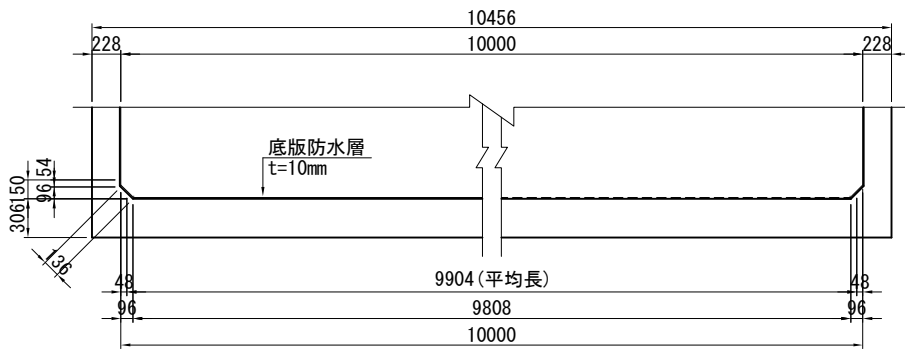
種 別	算 式	数 量
底版防水層撤去工	$t = 10 \text{ mm}$ $A1 = 9.808 \times 1.808 - 0.800 \times 0.500 \times 2 = 16.933 \text{ m}^2$ $A2 = (9.904 + 1.904) \times 2 \times 0.132 = 3.117 \text{ m}^2$ $\Sigma A = 20.050 \text{ m}^2$	20.05 m ²
コンクリート工	重版 $V = 2.000 \times 10.000 \times 0.054$ $+ (2.000 \times 10.000 + 1.808 \times 9.808) / 2 \times 0.096 = 2.891 \text{ m}^3$ $-V = -(0.800 \times 0.500 \times 0.150) \times 2 = -0.120 \text{ m}^3$ 補強桁 $n = 2$ カ所 $V = (0.300 \times 0.300 \times 2.000) \times 2 = 0.360 \text{ m}^3$ $\Sigma V = 3.131 \text{ m}^3$	3.13 m ³
型枠工	$\textcircled{1} A = \{(0.800 + 0.500) \times 0.150 \times 2\} \times 2 = 0.780 \text{ m}^2$ $\textcircled{2} A = 0.300 \times 2.000 \times 2 = 1.200 \text{ m}^2$ $\textcircled{3} A = 0.300 \times 2.000 \times 2 = 1.200 \text{ m}^2$ $\Sigma A = 3.180 \text{ m}^2$	3.18 m ²
支保工	$V = 2.000 \times 0.780 \times 0.300 \times 2 = 0.936 \text{ 空m}^3$	0.94 空m ³
鉄筋工	SD345 $D16 \quad W = 37.4 \text{ kg/1000} = 0.037 \text{ t}$ $D13 \quad W = 242.3 \text{ kg/1000} = 0.242 \text{ t}$ $\Sigma W = 0.279 \text{ t}$	0.04 0.24 0.28 t
	機械式継手 $D13 \quad n = 29 \text{ 個}$	29 個
	ジベル筋 (下) $D13 \quad L = 300 \quad \text{削孔径 } \phi 16 \quad L=100$	128 個
	アンカー (横) $D13 \quad L = 350 \quad \text{削孔径 } \phi 16 \quad L=100$	16 個
防水工	塗布防水 $a1 = 10.000 \times 2.000 = 20.000 \text{ m}^2$ $a2 = (0.500 + 0.800) \times 2 \times (0.54 + 0.15) = 1.794 \text{ m}^2$ $a3 = (0.500 + 0.800) \times 2 \times (0.51 + 0.15) = 1.716 \text{ m}^2$ $a4 = (1.860 - 0.100) \times 2 \times (10.000 + 2.000) = 42.240 \text{ m}^2$ $a5 = 2.000 \times 0.300 \times 2 \times 2 = 2.400 \text{ m}^2$ $a6 = -0.300 \times 0.300 \times 2 \times 2 = -0.360 \text{ m}^2$ $\Sigma A = 67.790 \text{ m}^2$	67.79 m ²
	コーナー部補強 $11 = (10.000 + 2.000) \times 2 = 24.000 \text{ m}$ $12 = 2.000 \times 2 \times 2 + 0.300 \times 3 \times 2 \times 2 = 11.600 \text{ m}$ $\Sigma A = 35.600 \text{ m}$	35.60 m
ステップ	$b = 400$ (後付けタイプ) $n =$ 補強構造図参照 $= 5 \text{ 本}$	5 本

底板防水層撤去工

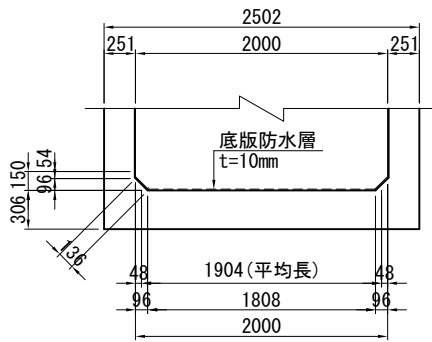
底板平面图



A-A 断面

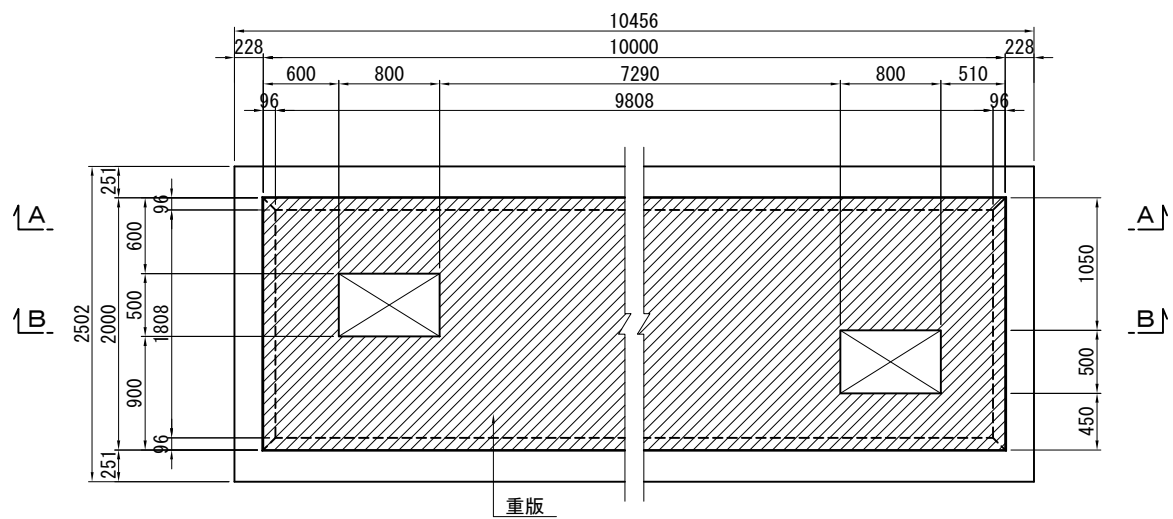


断面图

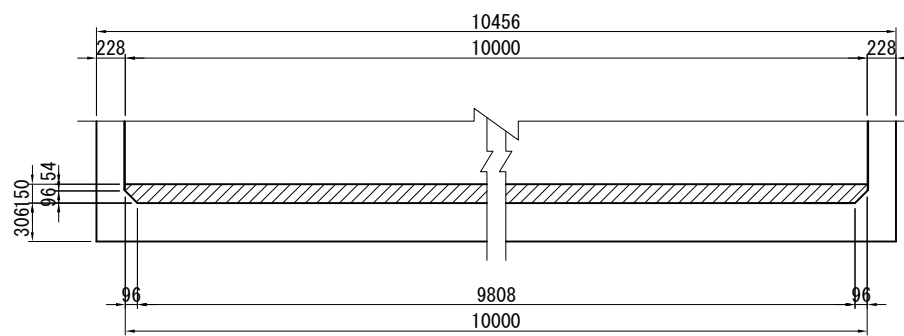


コンクリート工

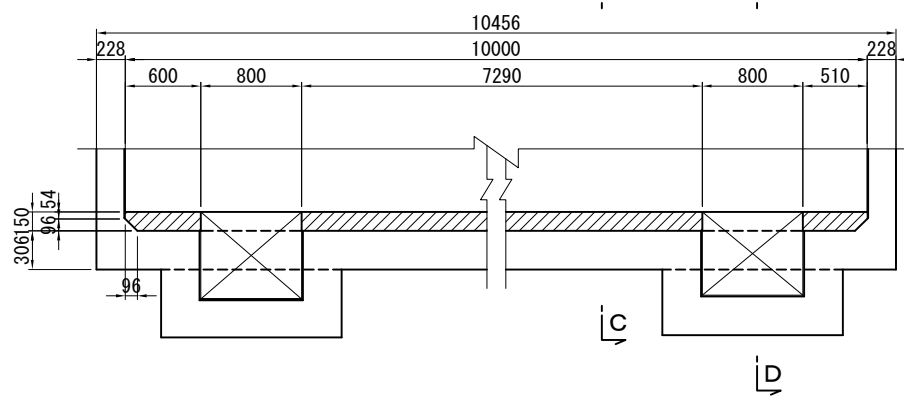
底板平面図



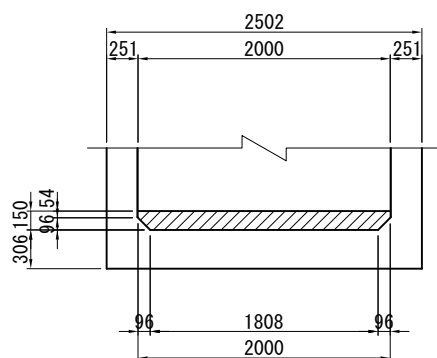
A-A断面



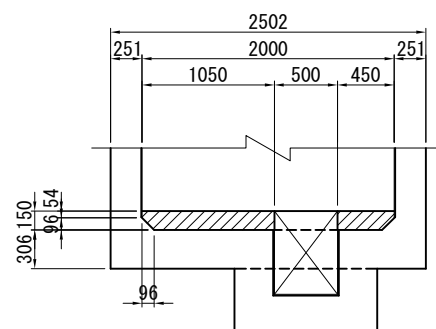
B-B断面



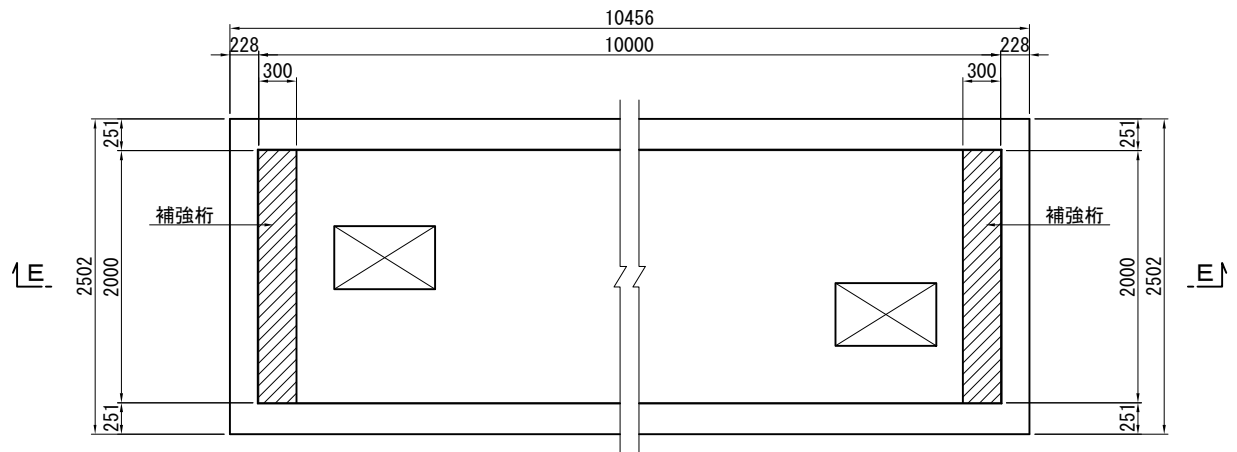
C-C断面



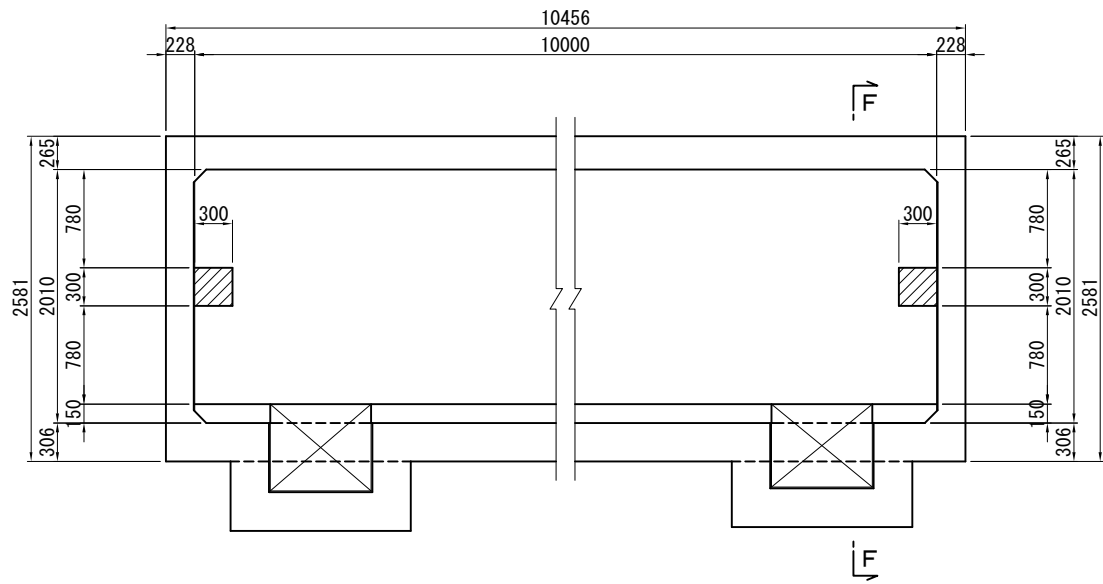
D-D断面



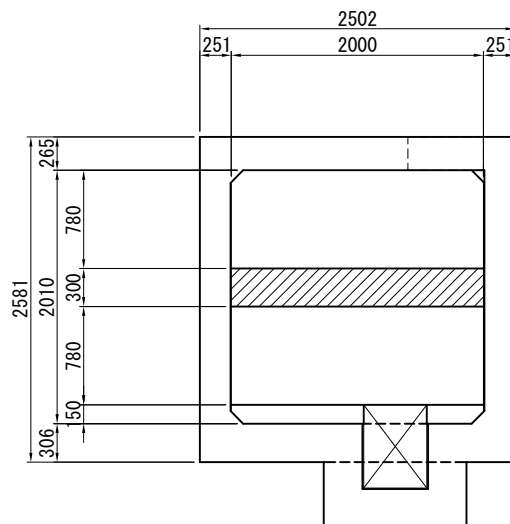
平断面图



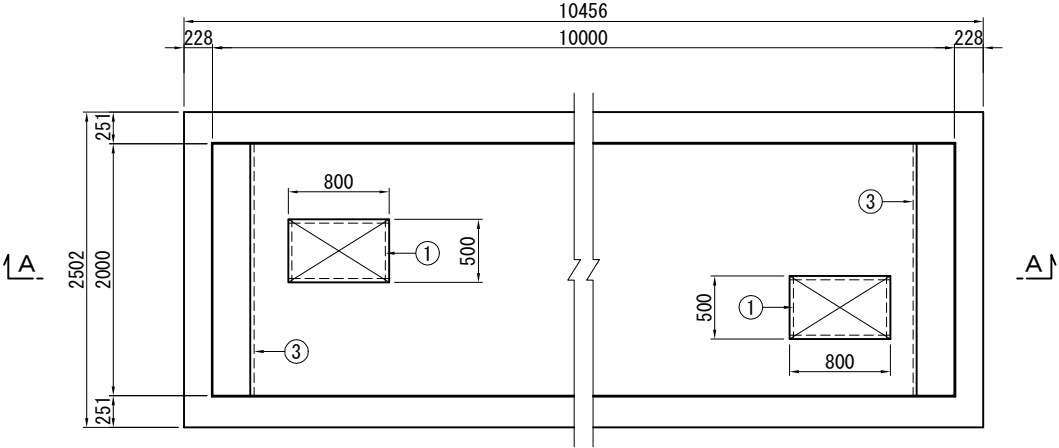
E-E断面



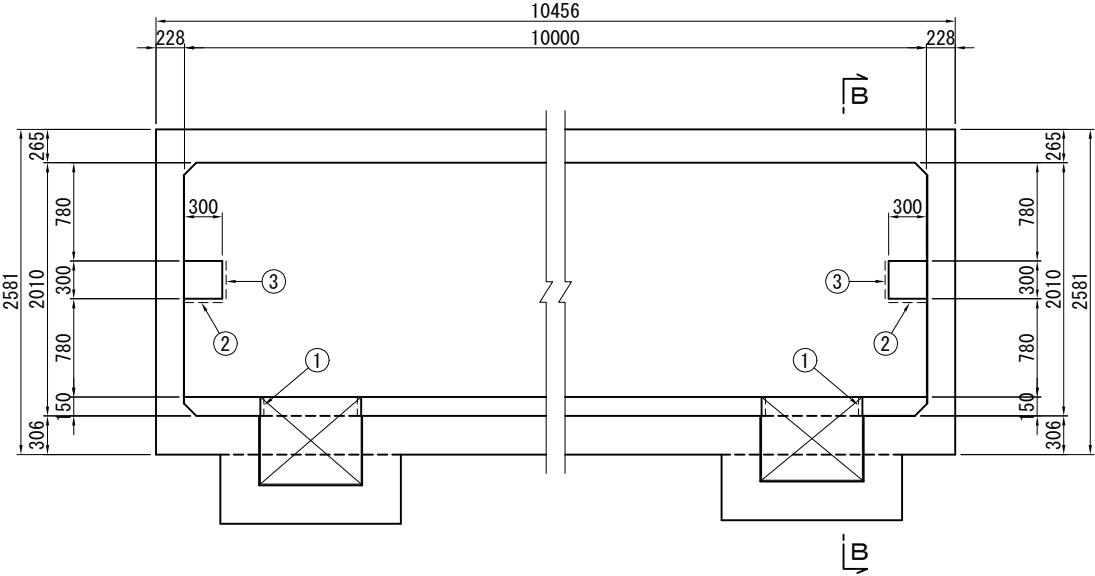
F-F断面



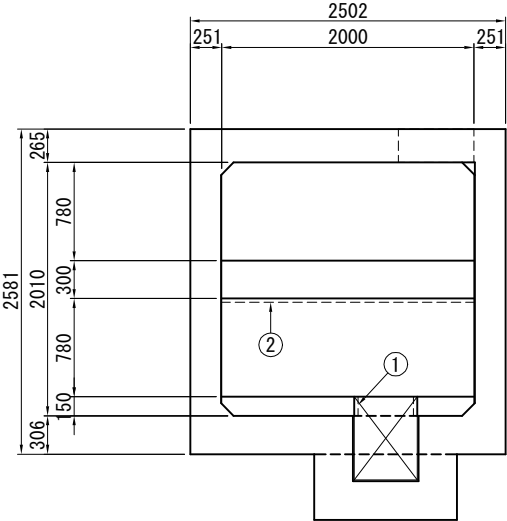
平断面图



A-A断面

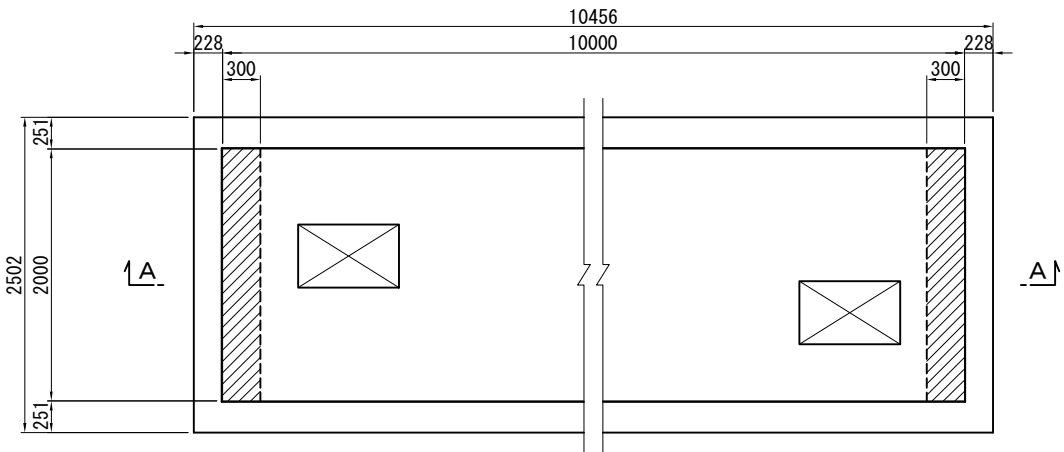


B-B断面

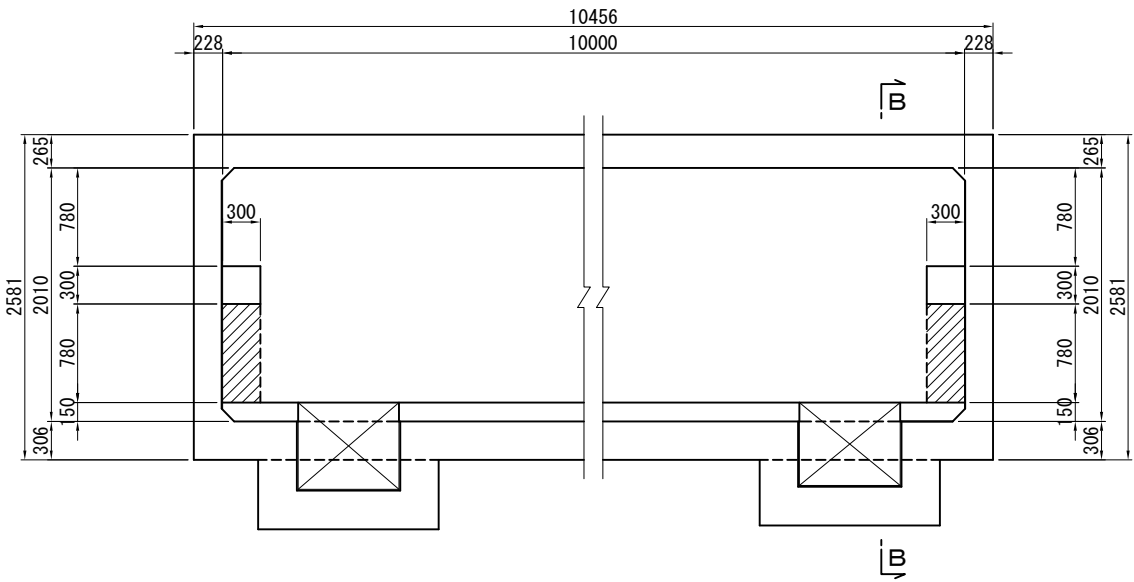


支保工

平断面图



A-A 断面



B-B 断面

